



www.colefabrics.com



Zest 725 & Storm 625 are also in the range

Zest 725



**Available in 25mm, 38mm.**

Widths with extended lead times  
Approx 4-5 weeks 12mm, 15mm,  
50mm.

Storm 625



**Available in 25mm, 38mm.**

Widths with extended lead times  
Approx 4-5 weeks 12mm, 15mm,  
50mm.



# 608 Single Sided Woven Edge

**White 910**



**Available in 25mm, 38mm, 50mm.**

Widths with extended lead times  
Approx 2-3 weeks 12mm, 15mm.

**Bridal 101**



**Available in 25mm, 38mm, 50mm.**

Widths with extended lead times  
Approx 2-3 weeks 12mm, 15mm.

**Oyster 135**



**Available in 25mm, 38mm.**

Widths with extended lead times  
Approx 4-5 weeks  
12mm, 15mm, 50mm

**Cream 130**



**Available in 25mm, 38mm, 50mm.**

Widths with extended lead times  
Approx 2-3 weeks 12mm, 15mm.

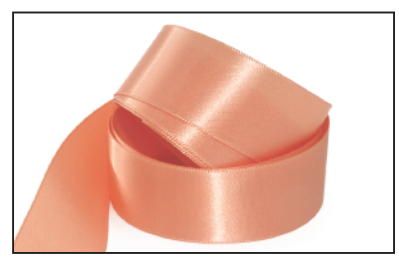
**Cucumber 723**



Check with Customer Service for  
Availability

Item can be dyed to order  
MOQ 5,000 Metres

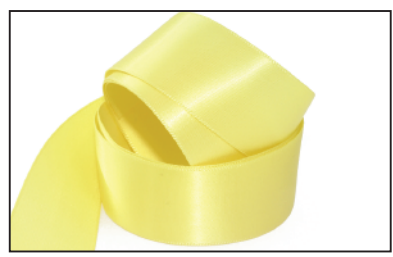
**Melba 320**



**Available in 25mm, 38mm.**

Widths with extended lead times  
Approx 4-5 weeks  
12mm, 15mm, 50mm

**Jasmine 210**



**Available in 25mm, 38mm.**

Widths with extended lead times  
Approx 4-5 weeks  
12mm, 15mm, 50mm

**Tuscan 240**



**Available in 25mm, 38mm, 50mm.**

Widths with extended lead times  
Approx 2-3 weeks 12mm, 15mm.

**Sunflower 270**



**Available in 25mm, 38mm, 50mm.**

Widths with extended lead times  
Approx 2-3 weeks 12mm, 15mm.

**Camisole 430**



**Available in 25mm, 38mm, 50mm.**

Widths with extended lead times  
Approx 2-3 weeks 12mm, 15mm.

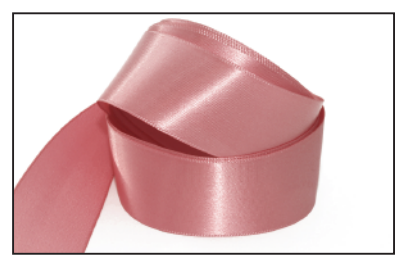
**Babe 440**



**Available in 25mm, 38mm.**

Widths with extended lead times  
Approx 4-5 weeks  
12mm, 15mm, 50mm

**Rosa 450**



**Available in 25mm, 38mm.**

Widths with extended lead times  
Approx 4-5 weeks  
12mm, 15mm, 50mm



**Stock Items, quicker dye lead-times.**



**Limited widths in stock, longer dye lead-times.**

# 608 Single Sided Woven Edge

Lipstick 460



**Available in 25mm, 38mm.**

Widths with extended lead times  
Approx 4-5 weeks  
12mm, 15mm, 50mm

Beauty 480



**Available in 25mm, 38mm, 50mm.**

Widths with extended lead times  
Approx 2-3 weeks 12mm, 15mm.

Paris Pink 470



**Available in 25mm, 38mm.**

Widths with extended lead times  
Approx 4-5 weeks  
12mm, 15mm, 50mm

Scarlet 850



**Available in 25mm, 38mm, 50mm.**

Widths with extended lead times  
Approx 2-3 weeks 12mm, 15mm.

Cranberry 880



**Available in 25mm, 38mm.**

Widths with extended lead times  
Approx 4-5 weeks  
12mm, 15mm, 50mm

Merlot 860



**Available in 25mm, 38mm.**

Widths with extended lead times  
Approx 4-5 weeks  
12mm, 15mm, 50mm

Claret 870



**Available in 25mm, 38mm, 50mm.**

Widths with extended lead times  
Approx 2-3 weeks 12mm, 15mm.

Serenade 490



Check with Customer Service for  
Availability

Item can be dyed to order  
MOQ 5,000 Metres

Passion 840



**Available in 25mm, 38mm, 50mm.**

Widths with extended lead times  
Approx 2-3 weeks 12mm, 15mm.

Fizz 835



**Available in 25mm, 38mm.**

Widths with extended lead times  
Approx 4-5 weeks  
12mm, 15mm, 50mm

Blaze 830



Check with Customer Service for  
Availability

Item can be dyed to order  
MOQ 5,000 Metres

Tango 340



**Available in 25mm, 38mm, 50mm.**

Widths with extended lead times  
Approx 2-3 weeks 12mm, 15mm.



Stock Items, quicker dye lead-times.



Limited widths in stock, longer dye lead-times.



# 608 Single Sided Woven Edge

Rose Gold 330



**Available in 25mm, 38mm.**

Widths with extended lead times  
Approx 4-5 weeks  
12mm, 15mm, 50mm

Sand Dune 150



**Available in 25mm, 38mm, 50mm.**

Widths with extended lead times  
Approx 2-3 weeks 12mm, 15mm.

Gold Leaf 160



**Available in 25mm, 38mm.**

Widths with extended lead times  
Approx 4-5 weeks  
12mm, 15mm, 50mm

Saddle 360



**Available in 25mm, 38mm.**

Widths with extended lead times  
Approx 4-5 weeks  
12mm, 15mm, 50mm

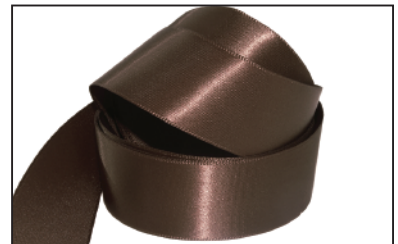
Chestnut 370



Check with Customer Service for Availability

Item can be dyed to order  
MOQ 5,000 Metres

Cocoa 165



**Available in 25mm, 38mm.**

Widths with extended lead times  
Approx 4-5 weeks  
12mm, 15mm, 50mm

Nutcracker 170



Check with Customer Service for Availability

Item can be dyed to order  
MOQ 5,000 Metres

Espresso 180



**Available in 25mm, 38mm, 50mm.**

Widths with extended lead times  
Approx 2-3 weeks 12mm, 15mm.

Heather 555



Check with Customer Service for Availability

Item can be dyed to order  
MOQ 5,000 Metres

Thistle 540



**Available in 25mm, 38mm.**

Widths with extended lead times  
Approx 4-5 weeks  
12mm, 15mm, 50mm

Mystic 550



Check with Customer Service for Availability

Item can be dyed to order  
MOQ 5,000 Metres

Damson 570



**Available in 25mm, 38mm, 50mm.**

Widths with extended lead times  
Approx 2-3 weeks 12mm, 15mm.



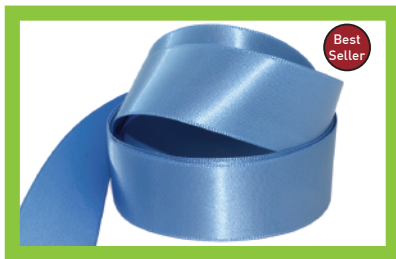
**Stock Items, quicker dye lead-times.**



**Limited widths in stock, longer dye lead-times.**

# 608 Single Sided Woven Edge

**Denim 620**



**Available in 25mm, 38mm, 50mm.**

Widths with extended lead times  
Approx 2-3 weeks 12mm, 15mm.

**Monaco 645**



**Available in 25mm, 38mm.**

Widths with extended lead times  
Approx 4-5 weeks  
12mm, 15mm, 50mm

**Ink 650**



**Available in 25mm, 38mm, 50mm.**

Widths with extended lead times  
Approx 2-3 weeks 12mm, 15mm.

**Navy 680**



**Available in 25mm, 38mm, 50mm.**

Widths with extended lead times  
Approx 2-3 weeks 12mm, 15mm.

**Regal 590**



**Available in 25mm, 38mm, 50mm.**

Widths with extended lead times  
Approx 2-3 weeks 12mm, 15mm.

**Ice 610**



**Available in 25mm, 38mm, 50mm.**

Widths with extended lead times  
Approx 2-3 weeks 12mm, 15mm.

**Angel Blue 705**



Check with Customer Service for  
Availability

Item can be dyed to order  
MOQ 5,000 Metres

**Kingfisher 635**



**Available in 25mm, 38mm.**

Widths with extended lead times  
Approx 4-5 weeks  
12mm, 15mm, 50mm

**Fathom 715**



**Available in 25mm, 38mm.**

Widths with extended lead times  
Approx 4-5 weeks  
12mm, 15mm, 50mm

**Ocean 710**



**Available in 25mm, 38mm.**

Widths with extended lead times  
Approx 4-5 weeks  
12mm, 15mm, 50mm

**Ivy 730**



**Available in 25mm, 38mm.**

Widths with extended lead times  
Approx 4-5 weeks  
12mm, 15mm, 50mm

**Grass 770**



**Available in 25mm, 38mm, 50mm.**

Widths with extended lead times  
Approx 2-3 weeks 12mm, 15mm.



**Stock Items, quicker dye lead-times.**



**Limited widths in stock, longer dye lead-times.**

# 608 Single Sided Woven Edge

Kiwi 760



**Available in 25mm, 38mm.**

Widths with extended lead times  
Approx 4-5 weeks  
12mm, 15mm, 50mm

Eau De Nil 720



**Available in 25mm, 38mm.**

Widths with extended lead times  
Approx 4-5 weeks  
12mm, 15mm, 50mm

Combat 735



Check with Customer Service for Availability

Item can be dyed to order  
MOQ 5,000 Metres

Village Green 750



**Available in 25mm, 38mm.**

Widths with extended lead times  
Approx 4-5 weeks  
12mm, 15mm, 50mm

Spruce 785



**Available in 25mm, 38mm, 50mm.**

Widths with extended lead times  
Approx 2-3 weeks 12mm, 15mm.

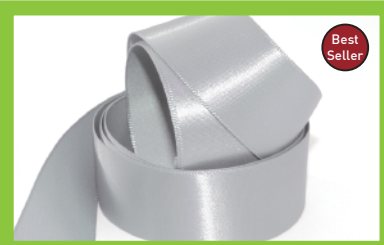
Bonsai 780



**Available in 25mm, 38mm, 50mm.**

Widths with extended lead times  
Approx 2-3 weeks 12mm, 15mm.

Silver Coin 920



**Available in 25mm, 38mm, 50mm.**

Widths with extended lead times  
Approx 2-3 weeks 12mm, 15mm.

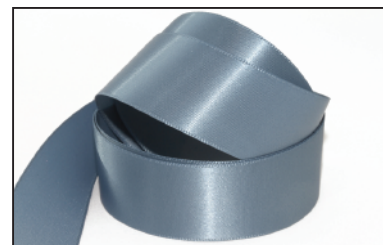
Dolphin 925



Check with Customer Service for Availability

Item can be dyed to order  
MOQ 5,000 Metres

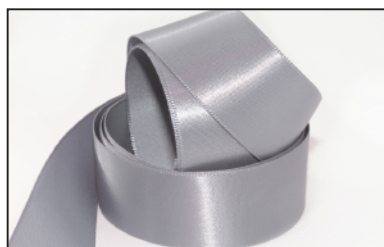
Pebble 950



**Available in 25mm, 38mm.**

Widths with extended lead times  
Approx 4-5 weeks  
12mm, 15mm, 50mm

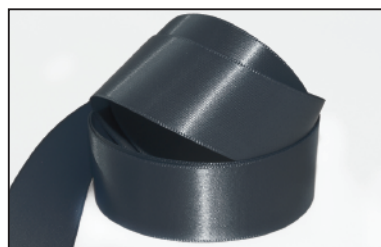
Steel 930



**Available in 25mm, 38mm.**

Widths with extended lead times  
Approx 4-5 weeks  
12mm, 15mm, 50mm

Dark Grey 970



**Available in 25mm, 38mm.**

Widths with extended lead times  
Approx 4-5 weeks  
12mm, 15mm, 50mm

Black 990



**Available in 25mm, 38mm, 50mm.**

Widths with extended lead times  
Approx 2-3 weeks 12mm, 15mm.



**Stock Items, quicker dye lead-times.**



**Limited widths in stock, longer dye lead-times.**

Zest 725 & Storm 625 are also in the range  
& are shown on the front cover.



STANDARD WIDTHS (mm)

QUALITY  
NUMBER 638

Double Face, Woven Edge,  
Polyester Satin Ribbon



3 5 7 10



12 15



20 25



38



50

QUALITY  
NUMBER 668/665

Grosgrain, Woven Edge,  
Polyester Ribbon



10 12 15



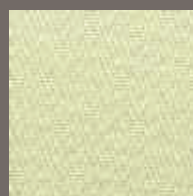
20 25



38

QUALITY  
NUMBER 608

Single Face, Woven Edge,  
Polyester Satin Ribbon



25



38



50

Other widths can be supplied to order.

## STANDARD ROLL LENGTHS



### 500 Metre Spools

3mm  
5mm  
7mm



### 250 Metre Rolls

Flat Wound

10mm  
12mm  
15mm  
20mm  
25mm  
38mm  
50mm



### 100 Metre Rolls

(Quality 608 Only)

Flat Wound

25mm  
38mm  
50mm

Other roll lengths can be  
supplied to order.

## FLANGE OPTIONS



Cardboard  
Flanges



Crystal  
Flanges

## ADDITIONAL OPTIONS



### Cut Pieces



U-CUT WITH STICKY PADS



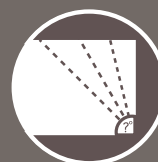
U-CUT



T-CUT



S-CUT



Other angle cuts  
available - just  
let us know  
what you need.



### Printed Ribbon

- Wet ink Rotary Print

Up to four colours.

- Foil Print

Up to three colours.

- Transfer Print

Full colour.

- Premium Raised Print

Up to two colours.



### Special Colours

Special dye to match colours  
available subject to a minimum  
order quantity.



## Primary Stock Colours



For 3mm ribbon please go to Swing Ticket Range

### 638 Double Sided Polyester Satin

Available in 5mm, 7mm, 10mm, 15mm, 25mm, 38mm, 50mm.  
Widths with extended lead times: 12mm, 20mm.

### 608 Single Sided Polyester Satin

Available in 25mm, 38mm, 50mm.  
Widths with extended lead times: 12mm, 15mm.

### 668/665 Polyester Grosgrain

Available in 10mm, 15mm, 25mm, 38mm.  
Widths with extended lead times: 12mm, 20mm.

### Over 5000m Orders

Orders of any available width of Primary colours over 5,000m available in 2-3 weeks.

### Under 5000m Orders

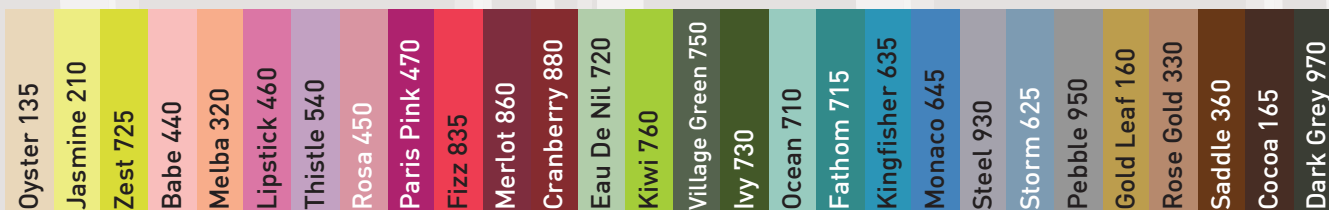
Extended lead time widths under 5,000m are available within 3-4 weeks.

### Bespoke Dyed Colours

Only available over 5,000m, require 2-3 weeks to post a sample and a further 3-4 weeks after signed approval is received.

Unders and Overs Policy applies.

## Secondary Stock Colours



### 638 Double Sided Polyester Satin

Available in 10mm, 15mm, 25mm.  
Widths with extended lead times: 12mm, 20mm.  
Not available under 5,000m order: 3mm, 5mm, 7mm, 38mm, 50mm.

### 608 Single Sided Polyester Satin

Available in 25mm, 38mm.  
Not available under 5,000m order: 50mm.

### 668/665 Polyester Grosgrain

Available in 15mm, 25mm.  
Widths with extended lead times: 12mm, 20mm.  
Not available under 5,000m order: 10mm, 38mm

### Over 5000m Orders

Orders of any available width of Secondary colours over 5,000m available in 4 weeks.

### Under 5000m Orders

Extended lead time widths under 5,000m are available within 6 weeks.

### Bespoke Dyed Colours

Only available over 5,000m, require 2-3 weeks to post a sample and a further 3-4 weeks after signed approval is received.

Unders and Overs Policy applies.

## Pack Information 638, 668, 665

Packs of	Widths		Approx Total Pack
4	10mm, 12mm, 15mm, 20mm, 25mm	4x 250m	1000m
2	38mm, 50mm	2x 250m	500m
1	3mm, 5mm, 7mm	1x 500m	500m

## Pack Information 608

Packs of	Widths		Approx Total Pack
5	25mm, 38mm	5x 100m	500m
2	50mm	2x 100m	200m